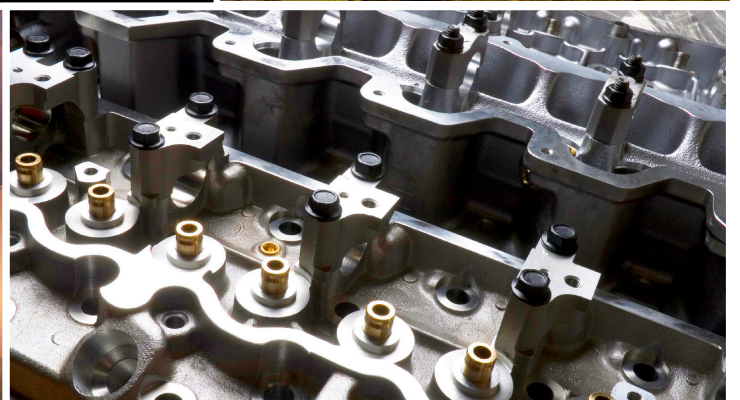
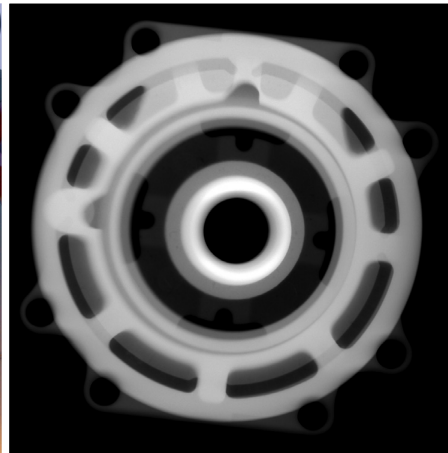
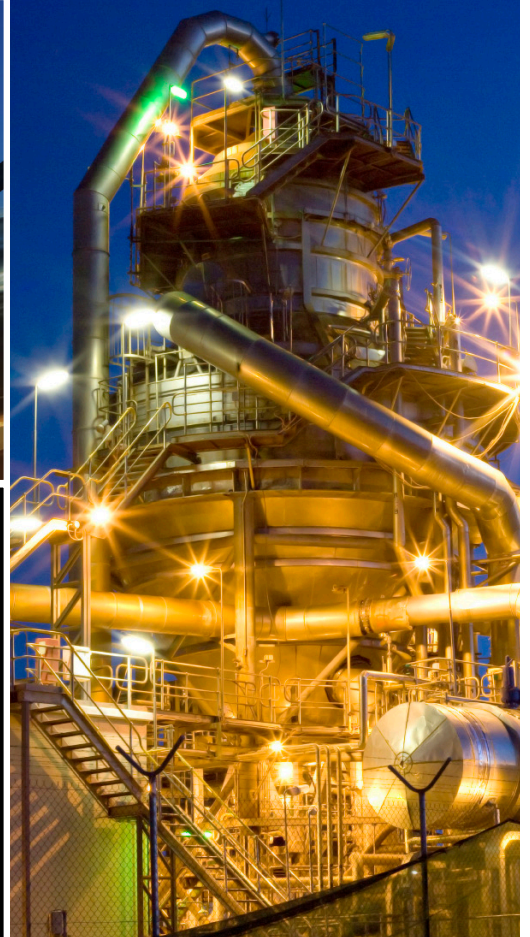


Carestream INDUSTREX Film

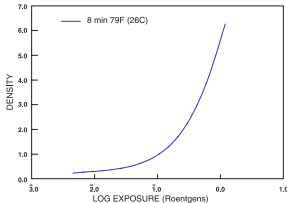
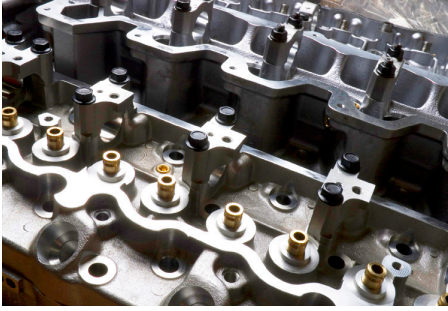
For Non-Destructive Testing

WHEN CLARITY IS CRITICAL



Carestream

INDUSTREX AA400 Film



Exposure: 220 kV Direct X-rays with lead screens

Processing: INDUSTREX Processor and INDUSTREX Chemicals

Densitometry: Diffuse Visual

INDUSTREX AA400 Film is extremely versatile, which makes it a great solution for many industrial applications. You can use it in multiple-film radiography and in single-film techniques—and with direct x-rays or with lead foil screens. Best of all, AA400 Film incorporates Carestream’s patented T-GRAIN Emulsion technology.

The Basics

AA400 Film is an ASTM E 1815 Class II and EN ISO 11699-1 Class 5 film that offers high speed, high contrast and gives you a fine-grain image. This film offers incredibly robust handling characteristics. It can withstand high temperatures and humidity, and it is resistant to static artifacts—so you get the image you need, whatever the conditions you’re working under.

Processing Options

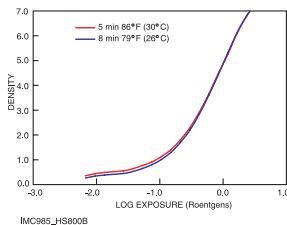
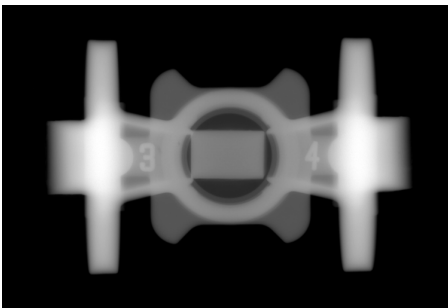
AA400 Film can be processed manually or automatically in a range of processing cycles. Notice: Observe precautionary information on product labels and Material Safety Data Sheets. Develop with rack and tank, using properly replenished solutions.

Ideal For

Aircraft inspection, Aero-engines, Archeological artifacts, Assemblies, Castings, Concrete, Electrical components, Forensics, Forestry, Munitions, Bomb Disposal, Nuclear, Pipelines, Tires, Welded Fabrication

INDUSTREX Processors/Cycles	Base + Fog	Contrast ¹
M43ic—8 min 79°F (26°C)	0.20	4.7
M43ic—5 min 86°F (30°C)	0.20	4.65

INDUSTREX HS800 Film



Exposure: 220 kV Direct X-rays with lead screens

Processing: INDUSTREX Processor and INDUSTREX Chemicals

Densitometry: Diffuse Visual

INDUSTREX High-Speed HS800 Film is our most versatile film for non-destructive testing. Use one film for any exposure method: direct x-rays, lead screen, fluorescent screen, or fluorometallic screen. Combined with LANEX Fast Screens, this film offers more speed than any film-screen combination available today.

The Basics

HS800 Film offers high speed and high contrast with Carestream’s T-GRAIN Emulsion technology. This medium-grain film can be processed in automatic processing chemicals in the short 5-minute cycle, or manually in a 2-minute cycle. With a cold image tone and high gloss finish, you get the image you need, whatever the conditions you’re working under.

Processing Options

HS800 Film can be processed manually or automatically in a range of processing cycles using INDUSTREX Single Part Developer Replenisher and INDUSTREX LO Fixer and Replenisher.

Ideal For

Thick-wall castings, Concrete, Pipeline and lay barge applications, Bridges, Construction

INDUSTREX Processors/Cycles	Base + Fog	Contrast ¹
M43ic—8 min 79°F (26°C)	0.22	4.4
M43ic—5 min 86°F (30°C)	0.23	4.3

¹Contrast calculated between net densities of 1.5 and 3.5.

INDUSTREX Films for Industrial X-ray Use - Product Guide¹

INDUSTREX Film / Product Code	System Class ²		Notched	Replaces		Available Formats (code)						Spectral Sensitivity	Safelight Filter	AUTOMATIC Processing Chemicals ³ — Fixer	Recommended Starting Points
	ASTM E1815	ISO 11699-1 EN ISO 11699-1		AGFA	FUJI	Sheets			Rolls						
						Non-interleaved (1)	Interleaved (5)	READY-PACK II (2)	PB Contactpak (7)	NIF Rolls (bulk) (359)	Lead Pack (382)				
DR50 / 6536	Special	C1	✓	D2	IX25	✓							X-ray and visible blue light	(Red) 1, 2 or GBX-2	AUTOMATIC 8 minute cycle Developer Time and Temperature: 100 seconds @ 26° C (79° F) 5 minute cycle Development Time and Temperature: 60 seconds @ 30° C (86° F) MANUAL⁶ Development Time and Temperature: 4 minutes @ 22° C (72° F)
M100 / 5532	Class 1	C2	✓	D3	IX50	✓		✓	✓	✓	✓	✓			
MX125 / 4748	Class 1	C3		D4	IX50	✓	✓	✓	✓	✓	✓	✓			
T200 / 6537	Class 1	C4	✓	D5	IX80	✓	✓			✓	✓				
AA400 / 5533	Class 2	C5	✓	D7	IX100	✓	✓	✓	✓	✓	✓	✓			
HS800 ⁵ /5747	--	--	✓	D8/ F8	IX150	✓			✓	✓					

¹ Please refer to the NDT Resources at www.carestream.com for film and chemistry technical data.

² Classification applies to INDUSTREX films processed in INDUSTREX chemicals, not the other manufacturer's product they are replacing.

⁴ For optimum archivability, such as required for nuclear applications, a 10 % increase in fixer replenishment rate may be desirable. For more information, consult TI-6K7080 INDUSTREX Films Technical Data.

⁵ HS800 displays high speed and contrast throughout an extended range of optical densities when used with fluorescent and fluorometallic screens. HS800 is recommended for use with LANEX Fast Screens, CAT No. 116 0688.

⁶ Eliminate guesswork in determining the proper exposure and get more consistent results by using the INDUSTREX Ir192 Film Exposure Calculator available through your regional Carestream NDT sales manager.

³ Automatic

INDUSTREX Single Part Developer Replenisher to make 40L, CAT No. 531 5288
 INDUSTREX Single Part Developer Starter to make 19L, CAT No. 835 1413
 INDUSTREX LO Fixer and Replenisher to make 40L, CAT No. 515 9082

Manual

INDUSTREX Manual Developer Kit to make 40L, CAT No. 105 7009
 - Kit contains 2 five-liter bottles of developer, 2 one-liter bottles of developer and 2 bottles of stop bath.
 INDUSTREX Manual Fixer Kit to make 40L, CAT No. 105 7017
 - Kit contains 2 five-liter bottles of fixer, 2 one-liter bottles of fixer and 2 bottles of rinse solution.
 Sold separately as
 INDUSTREX Manual Developer to make 40L, CAT No. 532 0635
 INDUSTREX Manual Fixer to make 40L, Cat No. 532 0643
 INDUSTREX Manual Stop Bath to make 40L, CAT No. 105 4873
 INDUSTREX Manual Rinse Solution to make 40L, CAT No. 105 7025