

# Mitcorp INDUSTRIAL VIDEOSCOPE

■ CLEARNESS ■ SHARPNESS ■ BRIGHTNESS



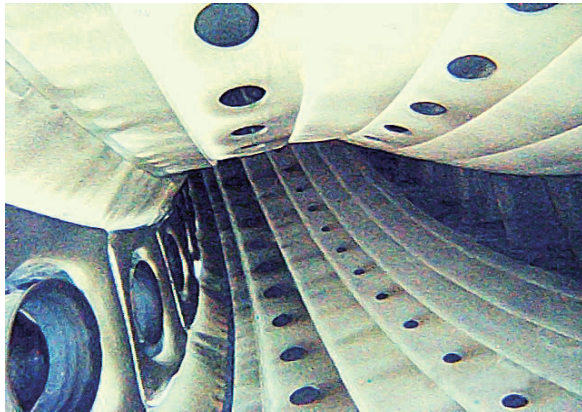
X500 | MX 500  
X1000 PLUS | MX 1000



# SUPER IMAGE QUALITY

Our outstanding image processing technology implementation to sharpen the edges and optimize the image quality for best inspection result.

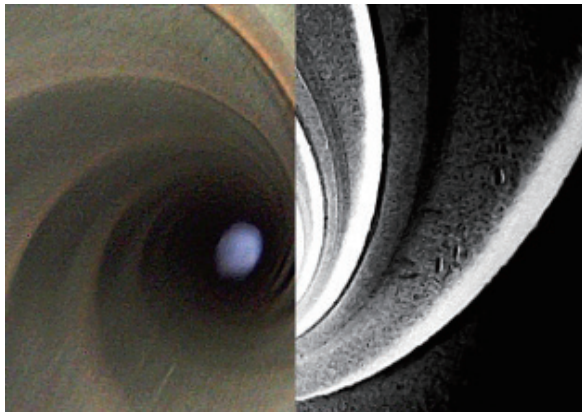
## DIVERSE APPLICATIONS



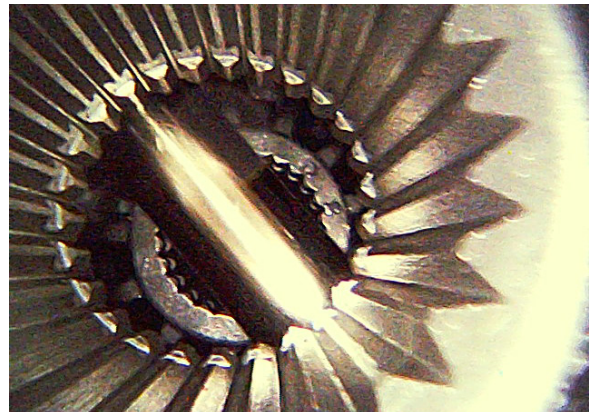
COMBUSTION CHAMBER



COMBUSTION CHAMBER



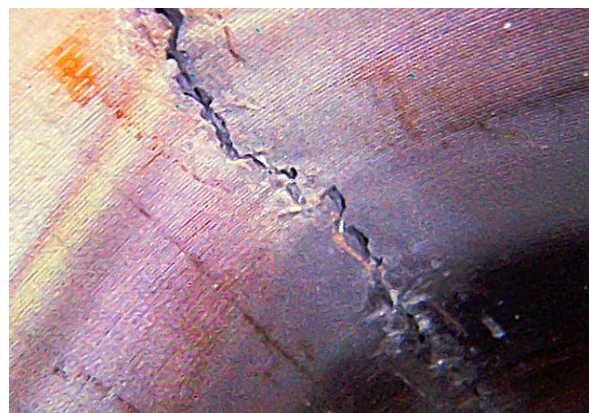
INNER SPIRAL PIPE



GEAR BOX



AIR COMPRESSOR



CRACKING

## X1000 PLUS



Features	Description
Display	7" LCD (800 * 480)
Snapshot	640 * 480, .jpeg
Recording	640 * 480, .avi
Dimensions	240 * 154 * 47 mm
System weight	1.3kg (2.86 lb)
Dust & Water proof	IP57
Drop resistance	1m
Power supply	Rechargeable Li battery, approx. 3.5 hours charging/ operating AC power: 100-240V, 5V, 3A
Working temperature	0°C~45°C (with battery) ; 0°C~40°C (with AC power adaptor)
Storage temperature	0°C~60°C
Relative humidity	Max 95%, non condensing
USB	Mass storage mode
Storage	SD card, up to 32G
AV output	NTSC / PAL
Audio input	Built-in microphone
Brightness Adjust	8 levels (5+3 Boost levels)

## X500



Features	Description
Display	5" LCD (640 * 480)
Snapshot	640 * 480, .jpeg
Recording	640 * 480, .avi
Dimensions	160 * 120 * 55 mm
Weight	745g (1.64 lb)
Waterproof	IP54
Drop resistance	1m
Battery	Rechargeable Li battery, approx. 3.5 hours charging/ operating AC power: 100-240V, 5V, 3A
Working temperature	0°C~45°C (with battery) ; 0°C~40°C (with AC power adaptor)
Storage temperature	0°C~60°C
Relative humidity	Max 95%, non condensing
Storage	SD card, up to 32G
Video output	NTSC / PAL
Audio input	Built-in microphone
LED indicator	Green LED: Power on ; Red LED: Charging system

## Insert Tube Options

### Two ways Articulation



4.5mm Front view

Features	Description	Features	Description
Probe head diameter	4.5mm	Button	Snapshot, Brightness+, Brightness-
Probe head length	13mm	Working temperature	-10°C - 60°C
Probe length	1.5m, 3m	Storage temperature	-10°C - 60°C
Articulations	right-left 180°(*)	Resolution	640x480
Probe head material	Stainless steel		
Probe material	Outer braided stainless steel		
LED	Front		
FOV	90°		
DOF	10mm~100mm		

\* The maximum articulation angle may degrade over time.

### Cast



5.4mm Front view

Features	Description	Features	Description
Probe head diameter	5.4mm	DOF	10mm~100mm
Probe head length	7.0mm	Working temperature	-10°C - 60°C
Probe diameter	4.5m	Storage temperature	-10°C - 60°C
Probe length	1m	Resolution	640x480
Articulations	0°	Button	Snapshot, Brightness+, Brightness-
Probe head material	Stainless steel		
Probe material	Stainless steel spring		
LED	Front		
FOV	90°		

### Macro



5.5mm Front view

Features	Description	Features	Description
Probe Head Diameter	5.5mm	Storage Temperature	-10°C to 60°C
Probe Head Length	20mm	Resolution	640x480
Probe Length	2m, 3m		
LED	Front / Side		
Probe Head Material	Stainless steel		
Probe material	Soft metal		
DOF	7mm~15mm		
FOV	60°		
Working Temperature	-10°C to 60°C		

**6.0mm  
360 Articulation**



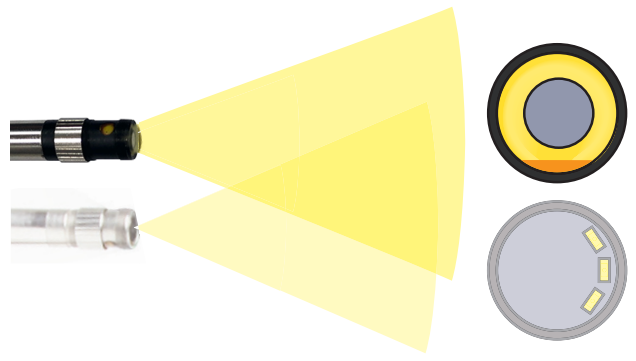
**Intuitive mechanical articulation design**

- Lightweight
- Reliable and durable
- Energy saving

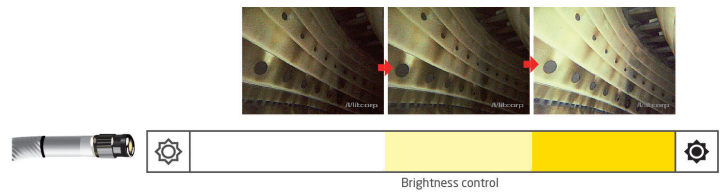
Features	Description
Probe head diameter	6.0mm (w/o lock ring)
Probe head length	24mm
Probe length	2m / 3m / 5m / 7m
Weight	2m-720g ; 3m-790g ; 5m-930g ; 7m 1070g
Articulation angle	2m, 3m full ways $\geq 120^\circ$ ; 5m, 7m full ways $\geq 80^\circ$ <sup>(*)</sup>
Probe head material	Stainless steel
Probe material	Outer braide stainless steel
Light source	Front / Side
FOV	90°
DOF	10mm ~ 100mm
Relative humidity	Snap / Recording, brightness+, brightness-
Button	Left-open, right-lock
Shaftlock	-10°C ~ 60°C
Working temp	-10°C ~ 60°C
Storage temp	640 x 480

\* The maximum articulation angle may degrade over time.

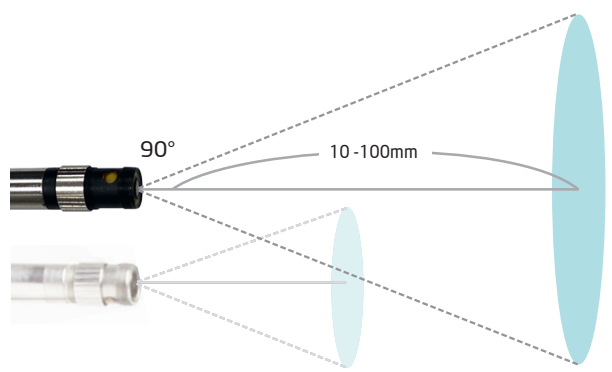
**Brighter**  
Enhance 300% illumination than ever



**Wider and Further**  
11 levels brightness adjustment



**Close up**  
90 degree Field of View  
10mm Depth of Focus



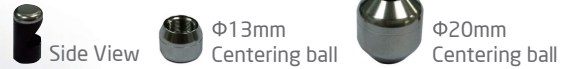
10 mm  
For Heat Exchanger

## PRM100



Features	Description
Probe head diameter	10mm
Probe head length	10mm
Probe length	15m / 25m
Probe head material	Stainless Steel
Probe material	Stainless Steel Spring/FRP
LED	Front/Side
Button (on meter)	Power, m/ft switch, LED backlight
Water proof	Under water 1m for 30 minutes
DOF	10mm~100mm
FOV	87°
Resolution	640 x 480
Working temperature	0°C ~ 60°C
Storage temperature	0°C ~ 60°C

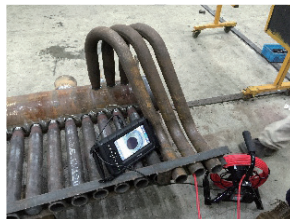
### ACCESSORIES



- 10mm diameter probe, perfect for heat exchanger inspection
- 15m / 25m pipe provides inspection flexibilities
- Work with X1000 PLUS videoscope system



INNER SPIRAL PIPE (FRONT VIEW)



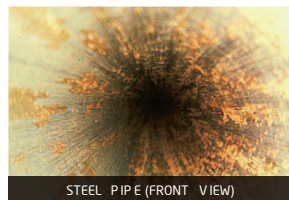
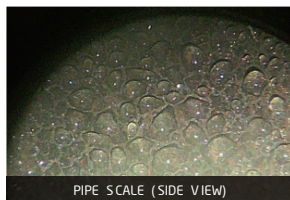
PIPE SCALE (SIDE VIEW)



STEEL PIPE (FRONT VIEW)



WELD JUNCTION (SIDE VIEW)



# ACCESSORIES



\*Also include : USB cable, AV cable, clean set, SD card, user manual, installation CD

# Mitcorp



FB: Mitcorpglobal



Youtube: Mitcorpglobal



e-mail: [sal@mitcorp.com.tw](mailto:sal@mitcorp.com.tw)

website: [www.mitcorp.com.tw](http://www.mitcorp.com.tw)

2F., No.75, Wenhua 1st Rd., Guishan, Taoyuan 333, Taiwan  
T+886-3-328-7177 F+886-3-328-7176